

***Lumens***<sup>®</sup> |

**CanConnect Pro (AI-Box1) & Audio-  
Technica ATND1061DAN  
Settings Guide**

# Download and install DM Manager 1.3.0

Click on:

<https://www.audio-technica.co.jp/proaudio/software/digitalmicrophonemanager/>



**Digital Microphone Manager**

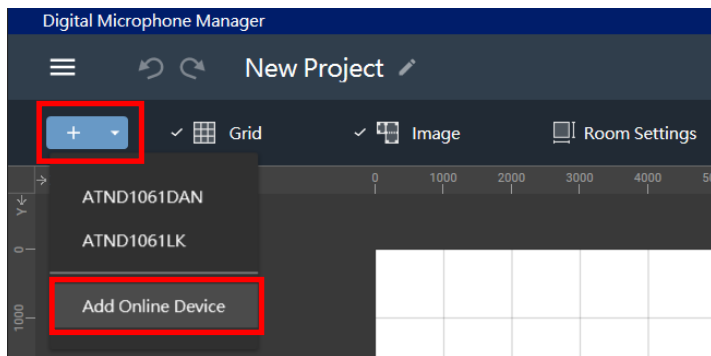
オーディオテクニカ：デジタルマイクロホンマネージャーは、実際に ATND1061 を設置する部屋のレイアウトに合わせたマイクの位置、収音範囲の設定、オーディオ設定などのプランニングが可能なアプリケーションです。

DM Manager 概要    DM Manager ダウンロード


1.3.0 : ボイスリフト機能を追加  
[Digital Microphone Manager リリースノート >>](#)

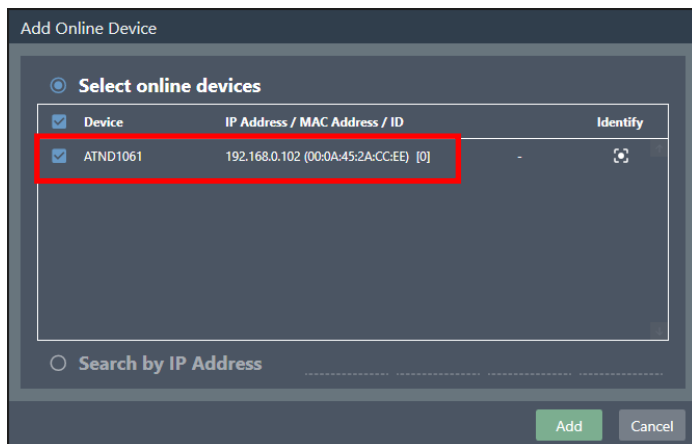
	ファイル名	OS	サイズ	更新日
Windows	<b>DigitalMicrophoneManager-1.3.0-Setup.zip</b> 	Win(64bit)	6.5MB	2023.12

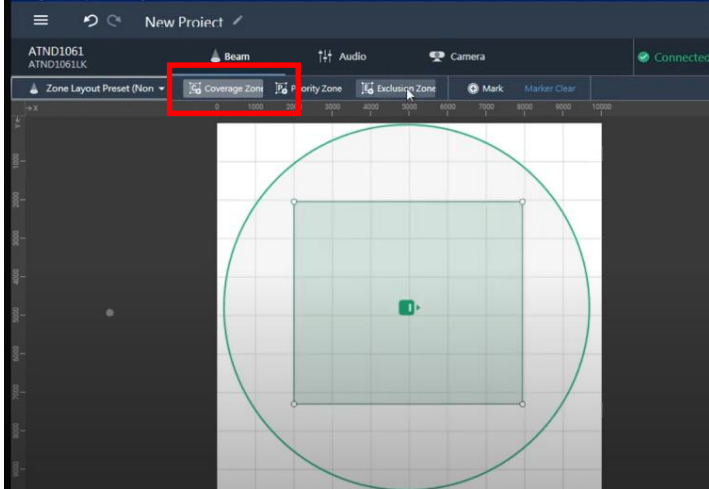
# Digital Microphone Manager Settings



## ■ Find the ATND1061DAN's IP address

1. Launch Digital Microphone Manager software
2. Select [New Project] and set [Room Size]
3. Click  and select [Add Online Device]
4. Select the connected device and make a note of the IP address of the device.



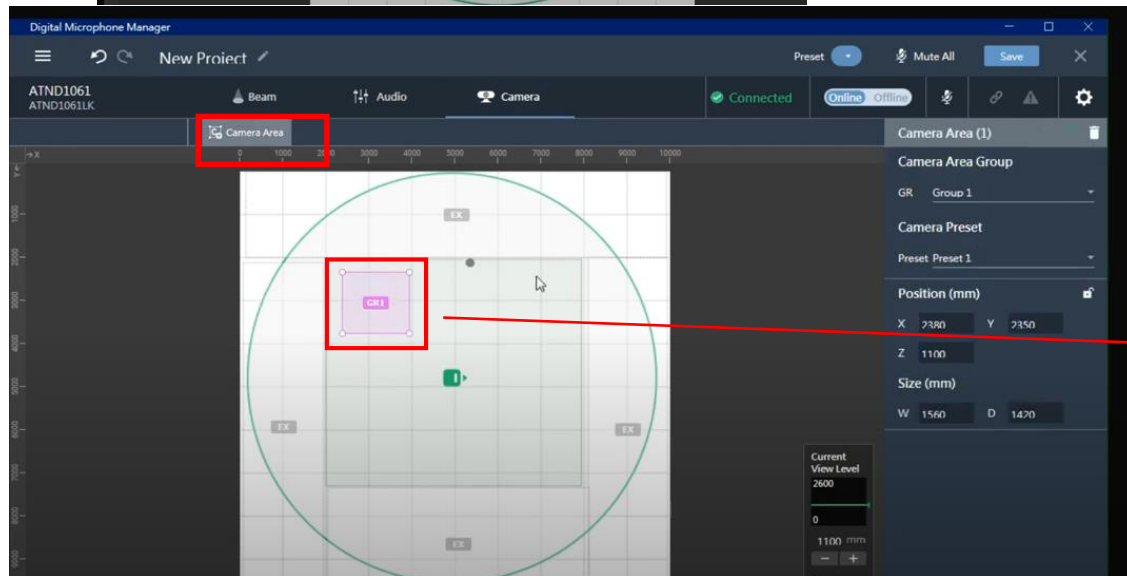


## 1. Coverage Zone

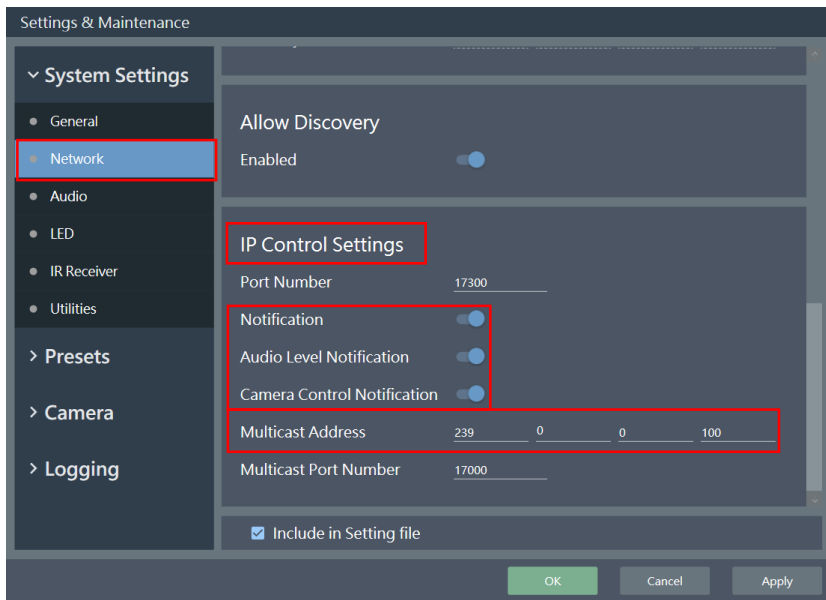
First, create a coverage zone to determine the region that can receive the sound

## 2. Camera Area


Place a camera area in the coverage zone. Each camera area in the interface will map to a corresponding CamConnect Array number



Array No.	Camera	Preset No.
1	VC-A51P(192,188 4.67)	1
2	VC-TR40(192,188 4.42)	2
3	PublicTest(192,188 4.102)	3
4	Off	4
5	Off	5
6	Off	6
7	Off	7
8	Off	8
9	Off	9
10	Off	10
11	Off	11
12	Off	12
13	Off	13



## ■ System Setting (Important!)

1. Click  [Settings & Maintenance]  
=> [System Settings]  
=> [Network] => [IP Control Settings]
2. Turn on [Notification]
3. Turn on [Audio Level Notification] & [Camera Control Notification]
4. Set [Multicast Address] to **239.0.0.100**

# CamConnect Pro Settings

## ■ Support Device & Settings

1. Pull down the Device item and select Audio-Technica ATND1061
2. Enter the IP address of the Audio-Technica ATND1061
3. Slide the [Connect] button to connect with ATND1061

The screenshot displays the Lumens web interface with three tabs: 'Yamaha: RM-CG', 'AudioTechnica: ATND1061', and 'Shure: MXCW'. The 'AudioTechnica: ATND1061' tab is active. The interface is divided into two main sections: 'Supported Devices & Settings' and 'Advanced'.

**Supported Devices & Settings**

- 1 Devices : AudioTechnica: ATND1061 (dropdown menu)
- 2 Device IP : 192.168.0.102 (text input)
- Port : 17300 (text input)
- 3 Connect :  (toggle switch)

**Advanced**

- Audio Trigger Level > dB : 30 (text input)
- Time To Trigger Preset : 1 Sec (dropdown menu)
- Back To Home Time : 10 Sec (dropdown menu)
- Back to Home Camera : All (dropdown menu)
- Back To Home Position : Home (dropdown menu) | 0 (text input)
- Apply (button)



## ■ Advanced Setting

1. Audio Trigger Level > dB
  - 1.1 Triggered only if audio source exceeds the selected dB value.
  - 1.2 Audio-Technica : 0~60 (we recommend 30dB)

Advanced

Audio Trigger Level > dB :

Time To Trigger Preset :  ▼

Back To Home Time :  ▼

Back to Home Camera :  ▼

Back To Home Position :  ▼

Apply

## ■ Camera Preset Setting

Set camera presets according to sound locations.

1. Make a sound. A green light will flash on the Array No to indicate the location of the noise.
2. If the green light is flashing on channel 1, select the camera preset which focuses on this position in the room.
3. Continue this process until the space is fully mapped.

The screenshot displays the 'Device & Camera Mapping' interface. On the left, a table lists camera presets for 15 channels. The first row, corresponding to Array No. 1, is highlighted with a red box. The table columns are 'Array No.', 'Camera', and 'Preset No.'. On the right, a room layout diagram shows a circular area with a grid. A green light icon labeled '1' is positioned in the center. Four camera preset areas are marked: GR1 (purple), GR2 (blue), GR3 (teal), and GR4 (yellow). A red box highlights the GR1 area, which is aligned with the position of the green light icon. The diagram also shows 'EX' labels at the top and bottom.

Array No.	Camera	Preset No.
1	VC-A51P(192.168.4.67)	1
2	VC-TR40(192.168.4.42)	2
3	PublicTest(192.168.4.102)	3
4	Off	4
5	Off	5
6	Off	6
7	Off	7
8	Off	8
9	Off	9
10	Off	10
11	Off	11
12	Off	12
13	Off	13
14	Off	14
15	Off	15

# Thank You!



MyLumens.com



Contact Lumens

